



LEUPOLD®

Freedom Red Dot Sight (Freedom RDS)

Mounting & Operating Instructions

Operating Instructions

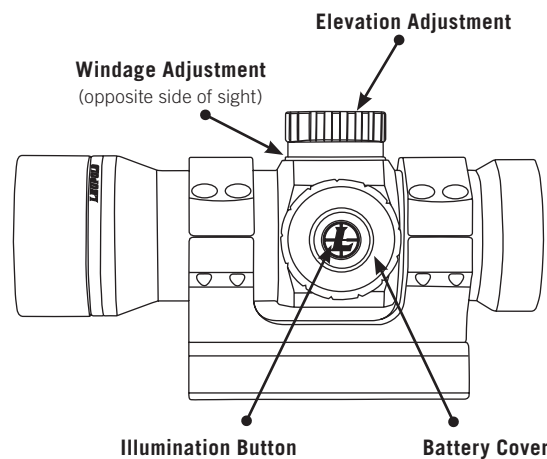
For optimal performance and to prevent damage, carefully follow all instructions.

Features

- Twilight Red Dot System
- Scratch-resistant lenses
- Unlimited eye relief
- 1/4 MOA click adjustments
- 8 illumination settings
- Motion Sensor Technology (MST)
- Guaranteed for life

Specifications

- Magnification: 1.0x
- Elevation adjustment range: 80 MOA
- Windage adjustment range: 80 MOA
- 15 MOA per revolution of adjustment
- Subtension of the aiming point: 1.0 MOA Dot
- Power supply: One (1) 3V CR2032 Lithium battery
- Dimensions: (LxWxH) 5.05" x 2.54" x 1.96" (128.2mm x 64.5mm x 49.7mm)
- Weight (with battery installed): 7.0oz. (198.4g)



*select models feature an external bullet drop compensation (BDC) dial

Package Contents

- Freedom RDS (SKU 174954, 176533, or 176204), 1.0 MOA Dot
- (1) 3V Lithium battery (CR 2032)
- Operating instructions
- T15/T27 Torx Key
- .050 Hex Key (BDC Model)



Cautions & Warnings:

Check to ensure that the magazine of the firearm has been removed or emptied, that the action is open, and that there is not a round in the chamber. Only after double checking the firearm, verifying it is empty and safe, should you proceed with the installation of the Freedom RDS. Do not look directly into the sun, light arcs or other high-intensity light sources. Keep away from children.

Installing the Battery

The Freedom RDS uses one CR2032 battery.

To install the battery:

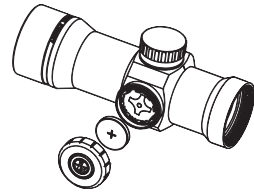
1. Twist the cover counterclockwise.
2. Insert the battery, positive (+) side up.
3. Replace the battery cover on the illumination housing and turn it clockwise until it is secure.

Using the Illumination

Push Button Illumination Control

To illuminate the red dot:

1. Press and release the button on the left side of the adjustment turret.
2. To adjust the intensity of the dot, press and release the button repeatedly. The aiming dot will flash 5 times when the brightest setting is reached, then begin decreasing each time the button is subsequently depressed. When the lowest setting is reached, the dot will flash 5 times and begin increasing each time the button is subsequently depressed.
3. To deactivate the illumination, press and hold the button for at least 3 seconds. When reactivated, the illumination will return to the last used setting.



NOTE: Advanced Use: To change the direction of adjustment, e.g., change from increasing intensity to decreasing intensity, press and hold the button for 2 seconds and immediately release the button. Then continue pressing and releasing to change intensity.

The Freedom RDS utilizes our proprietary Motion Sensor Technology® (MST™) to automatically preserve battery life. If the illumination is on and the sight is left motionless for a period of five minutes, the illumination will automatically turn off, but will immediately reactivate as soon as the sight senses any movement.

NOTE: The red dot illumination will begin a 10 sec. count down prior to the 5 minute timeout expiring. The red dot will flash 10 times before turning off.

To preserve the life of the battery, always remember to turn the illumination off when the scope is not in use. For prolonged storage, remove the battery.

WARNING: Always check to ensure that the firearm is unloaded before changing the battery in the scope.

Low Battery Indicator:

For convenience, there is a low battery indicator feature, which will cause the red dot to flash upon activation. To check the status of your battery, simply turn the illumination off, then back on. If the red dot flashes, you will soon need to replace the battery.

Installation

If your Freedom RDS came with a mount, follow the installation instructions below. Keeper screws should be on the right side of the firearm.

1. Determine the desired placement of the mount on the rail. Note that the Freedom RDS has unlimited eye relief.
2. Push the mount forward so it's tight against the rail and torque the mount keeper screws to 65 in-lbs.

If your sight did not include a mount, all other mounting options should follow the manufacturers instructions included with the mount.

Making Precise Elevation and Windage Adjustments

The Freedom RDS features ¼ MOA Finger Click Adjustments for elevation and windage. To make an adjustment remove the protective cap to expose the adjustment dial. (BDC model elevation dial is not capped) The letters/arrows found on the elevation and windage dials refer to the direction that the point-of-impact of the bullet is moved when an adjustment is made. Turn the dials by hand.

BDC Model: A special bullet drop compensation (BDC) elevation dial is featured on select Freedom RDS sights. These dials are calibrated to match the bullet drop of common 55 grain .223 Remington ammunition at distances to 550 yards in 50 yard increments. Once zeroed, a Zero Stop limits the dial to one revolution to prevent over or under rotating the dial.

To set the BDC dial, zero the Freedom RDS at 100 yards. Once zeroed, loosen the two .050 set screws using the provided wrench so the dial spins freely. Turn the elevation dial clockwise until the zero stop is engaged, and the "1" is aligned with the indicator mark on the maintube. Tighten the .050 set screws. You may now accurately "dial up" to the indicated distances. (Ex. The target is 350 yards away. Spin the BDC elevation dial so "3.5" is aligned with the indicator mark on the maintube and aim dead on.)

Note: When zeroing you may need to adjust the point-of-impact down, below the zero stop of the BDC dial in order to achieve proper zero. If this is the case, loosen the two .050 dial set screws until the dial spins freely. Turn the dial counterclockwise ½ turn, then tighten the set screws. You may now adjust the point-of-impact down farther. Repeat as necessary.

Zeroing the Point-of-Impact

The Freedom RDS windage and elevation adjustments move the point-of-impact 1/4 MOA per click and 15 MOA per revolution.

1. Determine the desired zero distance.
2. Shoot a 3 shot group.
3. Adjust the point-of-impact to the desired location on the target.

Leupold Lifetime Guarantee

Anyone can offer you a lifetime warranty, but guaranteeing performance takes serious dedication and craftsmanship. From our Beaverton, Oregon factory to the wilderness, the battlefield, and everywhere in-between, we won't let you down.

If your Leupold scope, sight, binocular, or spotting scope doesn't perform, we will repair or replace it for free, whether you're the original owner or not – forever.

For complete details visit leupold.com/warranty

Leupold Product & Technical Service

If your Leupold product fails to perform in any way, please contact a Leupold Product Specialist within our Product Service department to determine if the problem can be solved without sending the product to Leupold. Many times, the problem can be solved without sending the product to us.

Leupold Technical Service will assist you with the problem in the best and most efficient manner.

Please register your product at leupold.com/register.

To Reach Leupold Product Service

Phone:
5:00 a.m. - 8:00 p.m. PST M-F
1-800-LEUPOLD
or (503) 526-1400

Fax:
24 hours a day, 7 days a week
(503) 352-7621

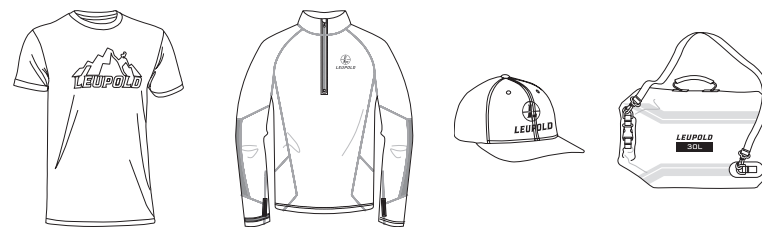
E-mail:
productspecialist@leupold.com

Parcel Service
Leupold Product Service
14400 NW Greenbrier Parkway
Beaverton, OR 97006-5791 USA

Postal Service
Leupold Product Service
P.O. Box 688
Beaverton, OR 97075-0688 USA

Leupold Pro Gear

Leupold Pro Gear is tested in the field and built to look great and perform. Shop the full lineup at Leupoldshop.com.



Leupold & Stevens, Inc.

PO Box 688 Beaverton, Oregon 97075-0688

leupold.com

1-800-LEUPOLD (538-7653)

Part #176381 Artwork #176382B

